

Safeguarding Adults

A Multi-Agency Approach

11th March 2009

**Councillor David Sprason - Cabinet Lead for Adult Social Care
Leicestershire County Council**

**Helen Pearson -Safeguarding Adults Co-ordinator for Leicester
Leicestershire & Rutland**



Leicestershire
County Council



What we will cover:

- National & Local Drivers in Safeguarding Adults
- What happens in Leicestershire, Leicester & Rutland
- Developing Activities
- Role of the Cabinet Lead
- Role of Elected members

- We welcome the greater focus on safeguarding
- Stimulus is there to raise our game
- As its ‘everybody’s business’ safeguarding must be part of the debate on everybody’s agenda



Leicestershire
County Council

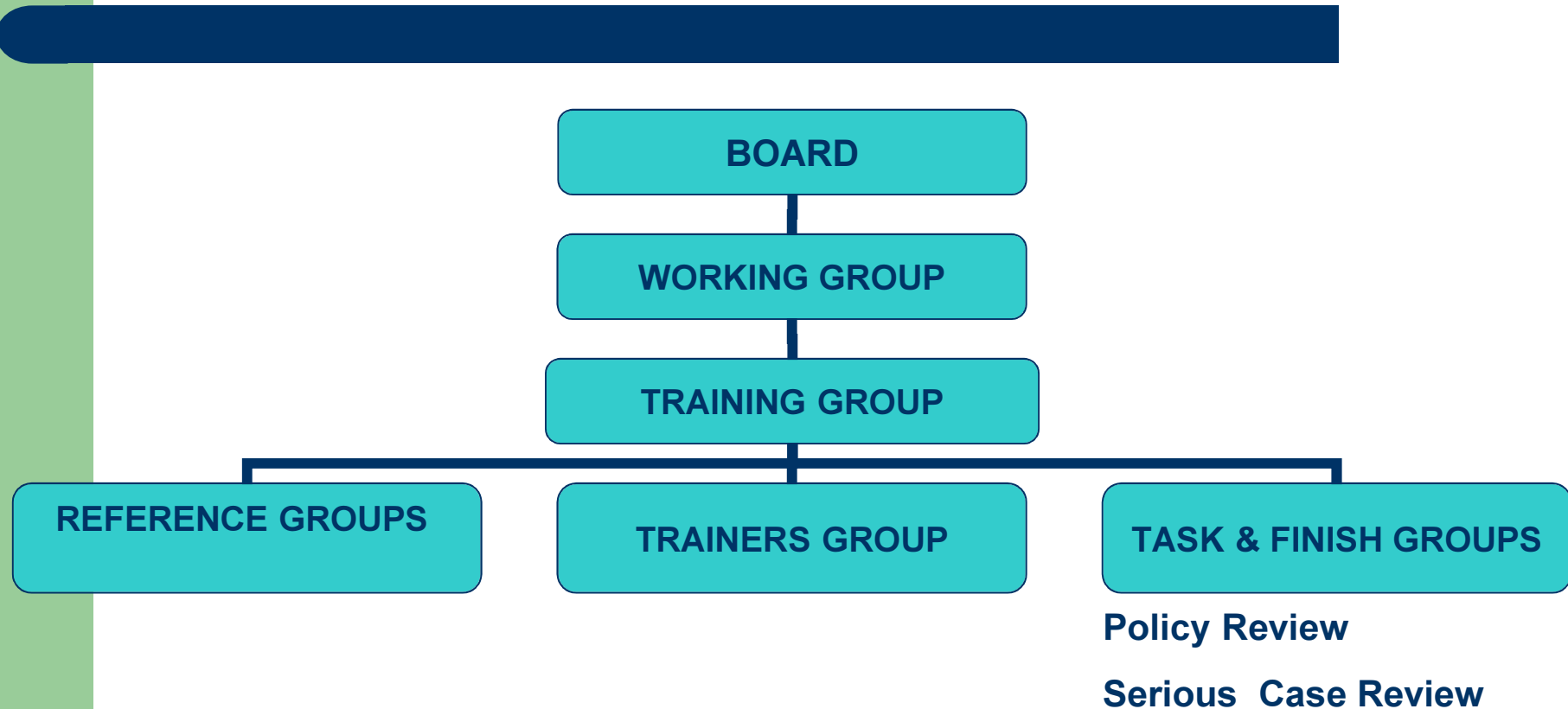


National & Local Drivers in Safeguarding

- ADSS 2005 Standards for Safeguarding
- Personalisation Agenda (Choice & Risk)
- 'No Secrets' 2000 review
- Serious Case Reviews
- A Key Threshold in Performance Management
- Mental Capacity/Deprivation of Liberty
- The impact of an Independent Safeguarding Authority
- Safer Community Agenda
- Dignity In Care programme



SAFEGUARDING FRAMEWORK





Leicestershire
County Council



Developing activities

- Update Local Policies and Procedures
- Continue to provide high quality accessible public information and advice.
- Involve people who use services and carers in shaping and evaluating safeguarding arrangements.
- Prevention strategies.
- Strengthening Links – Adults & Children.
- Safer Communities.

The Role of Elected Members Cabinet Lead on Safeguarding

- Ensure that the Council's Adults services responsibilities are properly considered, supported and monitored by the Cabinet, including an annual report to Cabinet on how they have been exercised.
- Work with the Director of Adult Services to ensure the Directorate is adequately funded and staffed to deliver these priorities, in and out of office hours.
- Ensure that all elected members receive Safeguarding Adults Awareness training and know how to refer concerns raised by the public.

Lead Office continued.....

- To contribute to the Council's Awareness raising events
- To act as a Spokesperson as required
- To liaise with Lead members in other service areas as necessary.
- To champion best practice at Local Government events.



All elected members

- Participate in Safeguarding Adults Training.
- Know how to refer concerns made by the public.
- Participate in the Scrutiny of Annual Reports
- Make the links between Safeguarding Children, Adults, Anti-Social Behaviour, Hate Crime, Domestic Violence.



Leicestershire
County Council



Think Family/Think Community

